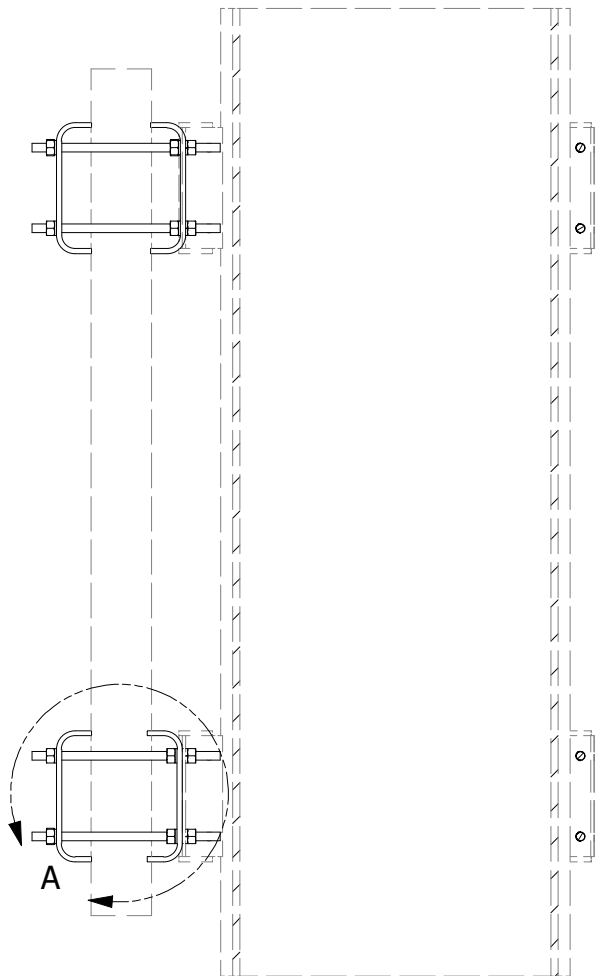
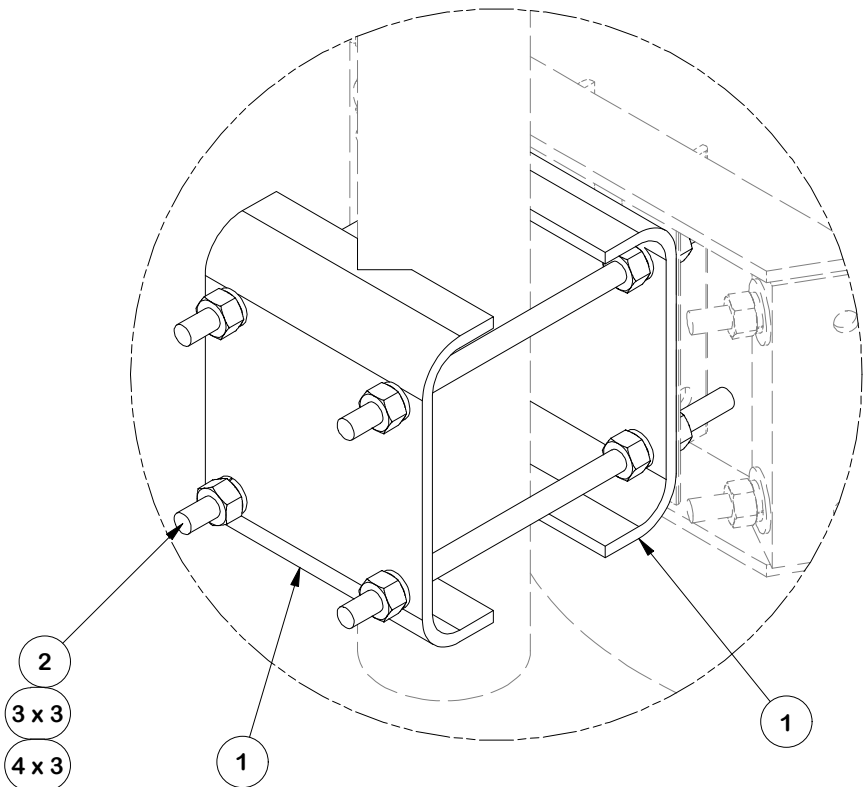


DETAIL A

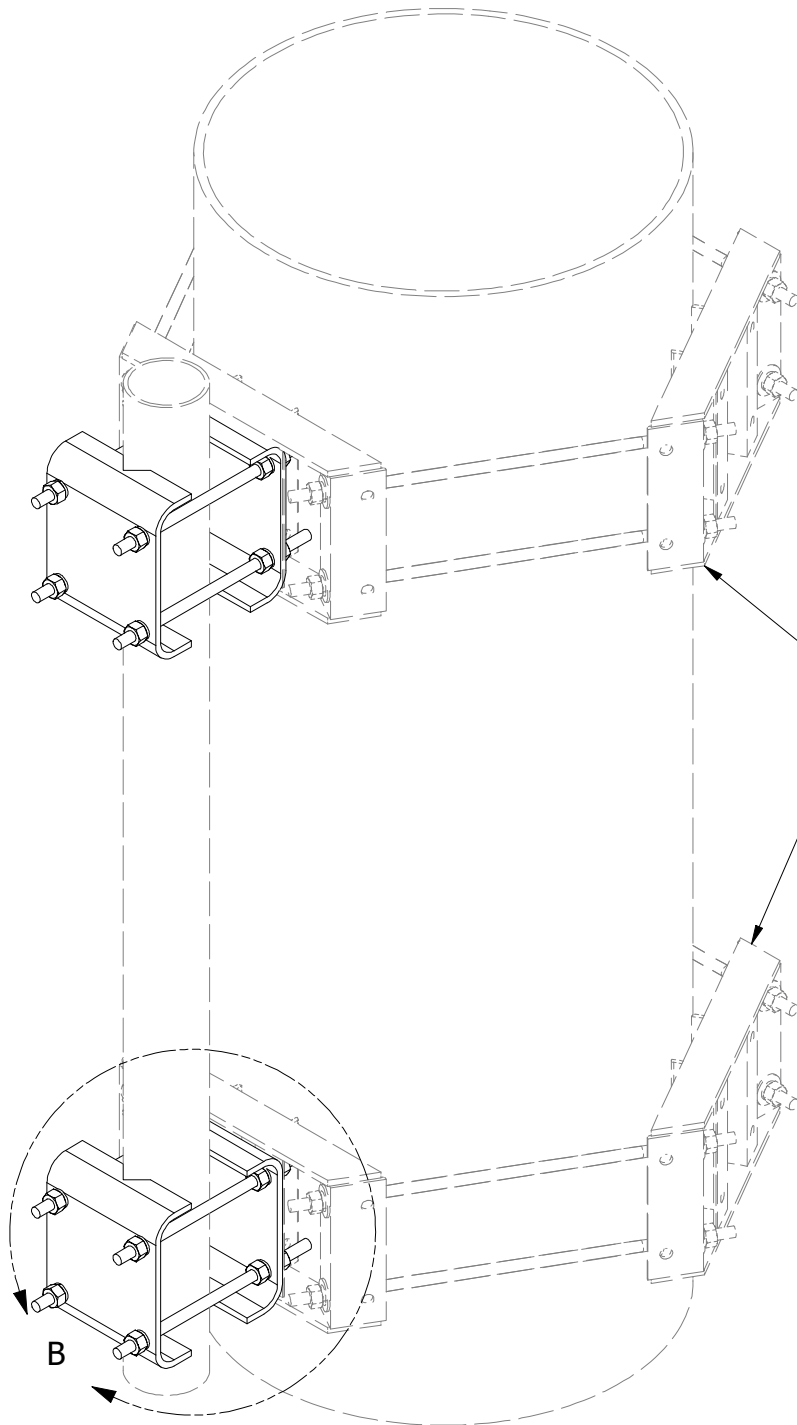


SECTION A-A



DETAIL B

PARTS LIST					
ITEM	QTY	PART NO.	PART DESCRIPTION	LENGTH	UNIT WT.
1	4	X-214130	BENT PLATE V-CLAMP	12 5/8 in	11.43
2	8	G58R-14	5/8" x 14" THREADED ROD (HDG.)		1.22
3	24	G58LW	5/8" HDG LOCKWASHER		0.03
4	24	G58NUT	5/8" HDG HEAVY 2H HEX NUT		0.13
TOTAL WT. #					57.05



LWRM UNIVERSAL RING MOUNT
FOR POLES 12" TO 45" DIA.
(ORDERED SEPARATELY)

OR

UGLM
MINI RING MOUNT
FOR POLES 10-1/2" TO 28" DIA.
(ORDERED SEPARATELY)

TOLERANCE NOTES

TOLERANCES ON DIMENSIONS, UNLESS OTHERWISE NOTED ARE:
SAWED, SHEARED AND GAS CUT EDGES ($\pm 0.030"$)
DRILLED AND GAS CUT HOLES ($\pm 0.030"$) - NO CONING OF HOLES
LASER CUT EDGES AND HOLES ($\pm 0.010"$) - NO CONING OF HOLES
BENDS AND ANGLES ARE $\pm 1/2$ DEGREE
ALL OTHER MACHINING ($\pm 0.030"$)
ALL OTHER ASSEMBLY ($\pm 0.060"$)

PATENT INFORMATION: WWW.SITEPRO1.COM/PATENTS

PROPRIETARY NOTE:
THE DATA AND TECHNIQUES CONTAINED IN THIS DRAWING ARE PROPRIETARY INFORMATION OF VALMONT INDUSTRIES AND CONSIDERED A TRADE SECRET. ANY USE OR DISCLOSURE WITHOUT THE CONSENT OF VALMONT INDUSTRIES IS STRICTLY PROHIBITED.

DESCRIPTION

FLUSH MOUNT ADAPTER
DUAL LEVEL

CPD NO.

SP1

DRAWN BY

CEK 10/12/2010

ENG. APPROVAL

CLASS

87

SUB

02

DRAWING USAGE

CUSTOMER

CHECKED BY

BMC 10/13/2010

PART NO.

FMA2

DWG. NO.

FMA2



A valmont COMPANY

Engineering
Support Team:
sp1engineering@valmont.com